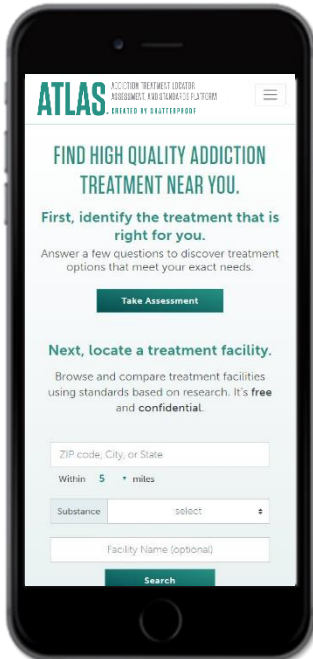


## WHAT IS ATLAS®?

**ATLAS®** (Addiction Treatment Locator, Assessment, and Standards platform) is a trusted source for individuals with substance use disorders and their loved ones to identify the appropriate type of addiction treatment that meets their needs and to locate a high-quality facility. This groundbreaking resource was created by Shatterproof, a national nonprofit organization dedicated to reversing the addiction crisis in America, to collect validated data on the quality of addiction treatment facilities and then make this information publicly available in user-friendly displays. ATLAS launched publicly on TreatmentATLAS.org in Phase 1 states on July 21<sup>st</sup>, 2020.

*ATLAS empowers those impacted by addiction to cut through confusion, deception, and misinformation and allows them to navigate to high-quality care while accelerating the adoption of clinical best practices across the field.*



ATLAS includes the following features:

**Addiction Treatment Needs Assessment.** A set of 13 consumer-friendly, expert-developed, anonymous questions that rapidly assess the severity and risk across each of the six ASAM Dimensions – the industry standard assessment criteria. Based on responses from the individual or loved one, the assessment provides guidance on the best treatment setting (e.g., outpatient, residential) to look for when seeking care.

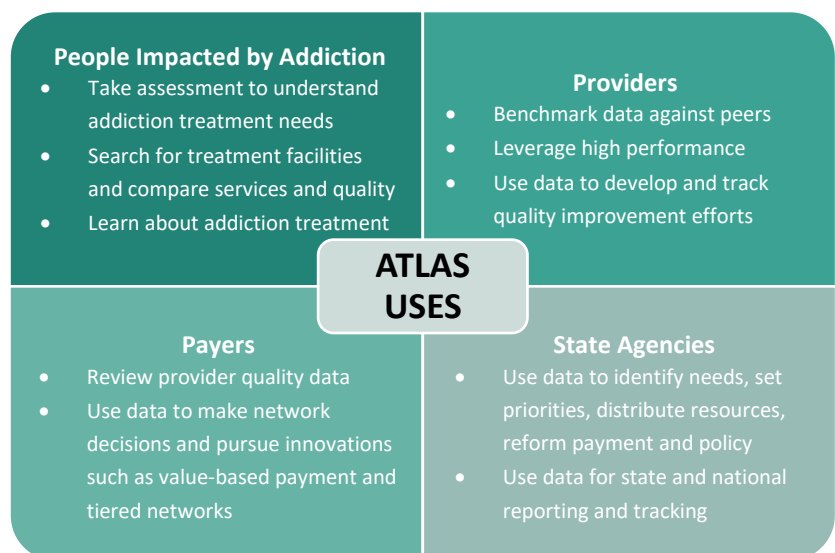
**Trustworthy Quality Data.** Shatterproof developed, tested, implemented, and validated the first standardized set of healthcare quality measures for addiction treatment facilities. This approach builds off best practices from other areas of healthcare and was conducted through close collaboration with experts across the field. Facility-reported quality data are organized by the [Shatterproof National Principles of Care®](#) in the “Signs of High-quality Care” section of each facility profile to help consumers compare and select the right treatment providers. Validated patient feedback measures are also included and collected in an ongoing fashion using an innovative crowdsourcing approach.

**Search Interface and Compare View.** ATLAS includes a user-friendly search interface that offers filters such as location, treatment setting, insurance accepted, or type of substance used to allow people to refine their search results to addiction treatment facilities most appropriate for their needs. ATLAS users can then select up to 3 facilities in a side-by-side dynamic dashboard to compare the quality indicators across the facilities.

**The Most Comprehensive List of Facilities.** Shatterproof’s team has conducted a deep dive analysis between other publicly available lists of addiction treatment resources to ensure that ATLAS is the most comprehensive. This was possible thanks to ATLAS state partnerships. While not every facility across the Phase 1 states provided the voluntary quality information, all facilities are still listed in ATLAS and it is clearly displayed where data are not available. Patient feedback and claims data can still be gathered for facilities that did not submit voluntary data.

**Professional Portals.** ATLAS includes customized password-protected professional portals that provide detailed information and functionalities to specific professional audiences, including data stratifications, state- and national-level averages, and access to raw data.

**Educational Content.** Highly curated, consumer-friendly educational content on addiction and addiction treatment is linked throughout the site and via tooltips (i.e., icons that offer additional details on the information displayed).



## PHASE 1

ATLAS Phase 1 was implemented in six states (DE, LA, MA, NC, NY, WV) in partnership with a state agency or anchor organization. Shatterproof employed a robust state-based approach to engage key stakeholders from various sectors in ATLAS development and implementation. To build ATLAS, Shatterproof also partnered with RTI International, an independent research institute with expertise in behavioral health and quality measurement.

The ATLAS quality measures were developed through a multi-year process that involved several rounds of stakeholder and expert input and culminated in a National Quality Forum Expert Panel Strategy Session. The measures were designed to examine whether addiction treatment facilities are delivering care in accordance with [Shatterproof's National Principles of Care®](#), using multiple, validated data sources. Quality measures were then collected from addiction treatment facilities in the Phase 1 states via the following data sources:

The **Treatment Facility Survey (TFS)** is an online survey administered to all addiction treatment facilities in the state. The TFS gathers information on the processes, structures, and services of each facility. Multiple forms of validation ensure facility responses are accurate. In Phase 1, more than 1,200 addiction treatment facilities across the 6 states completed the TFS – approximately 50% of all facilities.

The **Patient Experience Survey (PES)** is a series of multiple-choice questions including patient-reported outcomes, use of best practices by the treatment facility, and patient perceptions of care. Also included is one open-ended question. These questions were derived from NQF-endorsed items in the Consumer Assessment of Healthcare Providers and Systems (CAHPS) program and Experience of Care and Health Outcomes (ECHO) Survey. These are developed by the government-run Agency for Healthcare Research and Quality (AHRQ) to assess patient experiences of care at hospitals and in other healthcare settings and are widely used to track the field, inform policy, and, in some cases, impact reimbursement. The PES is completed by patients of the addiction treatment facility or a loved one acting as a patient proxy. PES responses are collected via “Leave a Review” buttons in facility profiles on the ATLAS website and are analyzed and updated every 24 hours. Responses are anonymous but are subject to natural language processing and algorithmic reviews to screen for potential fraudulent feedback. Data are publicly displayed on facility profiles once 20 responses have been submitted—the minimum threshold to protect patient anonymity and prevent biased results.

Four **Claims-Based Measures** were calculated by State Medicaid agencies and private health insurers that cover a significant number of individuals in ATLAS states. While currently used to assess quality at the health plan level, claims-based measures have never been used in this way for addiction treatment, so a novel attribution methodology had to be created for this work. Not all data contributing partners could successfully compute the measures, but a large sample of data was still captured. The data passed a series of reliability and validity tests and show useful variation in treatment quality. However, due to the complexity of these data and their limited availability in some states, claims measures will not be displayed publicly in Phase 1. Given that some partners reported a significant burden associated with calculating these measures, Shatterproof determined that their inclusion is not a requirement for expansion of ATLAS to new states.

Phase 1 data revealed that the measures are useful indicators of addiction treatment quality, showing differences in the quality of care across facilities, states, and treatment settings that allow for the identification of high-performing and low-performing facilities. These findings confirm that ATLAS will not only help patients and families navigate to high-quality care, but also support the treatment community in aligning care delivery with best practices.

## NEXT STEPS

Shatterproof is currently working to support the sustained implementation in the Phase 1 states and to rapidly expand this resource to serve people with substance use disorders and their loved ones nationally. Beginning in 2021, Shatterproof will expand to additional Phase 2 states. ATLAS will be especially critical given the predicted influx of need for substance use disorder treatment due to factors surrounding the COVID-19 pandemic, such as increased stress, unemployment, and social isolation. While some states are already responding to this by prioritizing “locator” services to help connect individuals to available addiction treatment, ATLAS offers an enhanced solution by empowering people impacted by addiction to navigate to appropriate, high-quality care. Research shows that addiction treatment that utilizes evidence-based best practices is more likely to put people on the path of success, save costs, and reduce future tragedy. ATLAS helps people access this kind of care and supports providers in achieving it.